



# SGS

SRK Grading System

World's 1<sup>st</sup> ISO Certified  
**Diamond Grading System**

PURETRANSPARENCY



## CARAT

<b>Ct.</b>	<b>0.30</b>	<b>0.50</b>	<b>0.70</b>	<b>1.00</b>	<b>1.50</b>	<b>2.00</b>	<b>3.00</b>	<b>5.00</b>	<b>10.00</b>	<b>15.00</b>	<b>20.00</b>	<b>30.00</b>
<b>Dia. (mm)</b>	4.30	5.10	5.68	6.40	7.30	8.05	9.20	10.90	13.70	15.75	17.33	19.84
<b>Total Depth (mm)</b>	2.68	3.18	3.55	3.98	4.55	5.00	5.72	6.80	8.55	9.78	10.75	12.3

## CLARITY

<b>FL</b>		<b>VVS</b>		<b>VS</b>		<b>SI</b>		<b>I</b>	
<b>FL</b> Flawless <b>IF</b> Internally Flawless		<b>VVS1</b> Very Very Slightly Included 1 <b>VVS2</b> Very Very Slightly Included 2		<b>VS1</b> Very Slightly Included 1 <b>VS2</b> Very Slightly Included 2		<b>SI1</b> Slightly Included 1 <b>SI2</b> Slightly Included 2 <b>SI3</b> Slightly Included 3		<b>I1</b> Included 1 <b>I2</b> Included 2 <b>I3</b> Included 3	

## COLOR



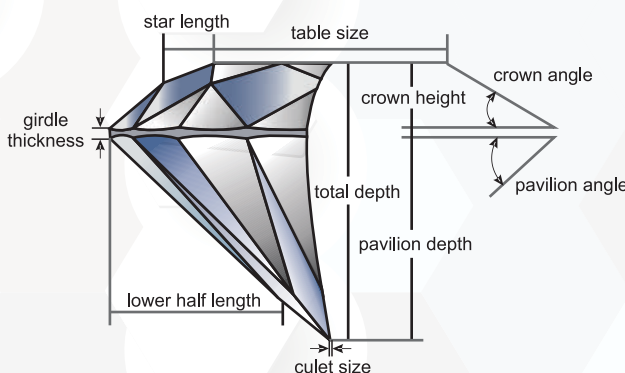
## FANCY COLOR

<b>Intensity</b> Faint   Light   Intense   Vivid   Deep   Dark	<b>Color</b> Yellow   Pink   Blue   Green   Purple Orange   Gray   Brown	<b>Overtone</b> Brownish   Greenish   Yellowish   Pinkish Purplish   Grayish   Orangy
---	--	---

## CUT

<b>EX</b> Excellent Cut	<b>VG</b> Very Good Cut	<b>G</b> Good Cut	<b>F</b> Fair Cut
----------------------------	----------------------------	----------------------	----------------------

### Major factors that affect Cut:



## POLISH

<b>EX</b> Excellent Polish	<b>VG</b> Very Good Polish	<b>G</b> Good Polish	<b>F</b> Fair Polish
-------------------------------	-------------------------------	-------------------------	-------------------------

## SYMMETRY

<b>EX</b> Excellent Symmetry	<b>VG</b> Very Good Symmetry	<b>G</b> Good Symmetry	<b>F</b> Fair Symmetry
---------------------------------	---------------------------------	---------------------------	---------------------------

## FLUORESCENCE




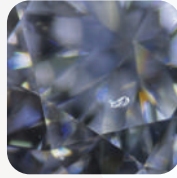




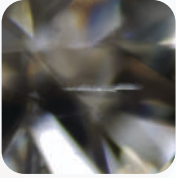


### Fluorescence Intensity



### Fluorescence Color

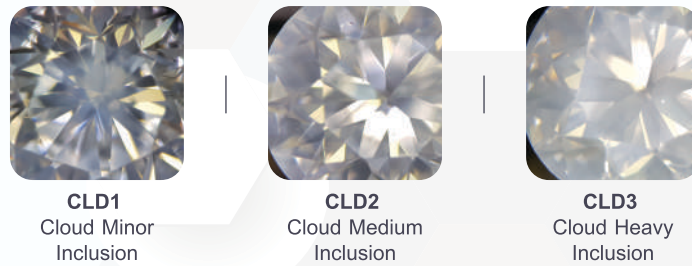
<b>BLUE</b> Blue Fluorescence	<b>YELLOW</b> Yellow Fluorescence	<b>WHITE</b> White Fluorescence	<b>ORANGE</b> Orange Fluorescence	<b>BLUISH GREEN</b> Bluish Green Fluorescence
----------------------------------	--------------------------------------	------------------------------------	--------------------------------------	--

# WHITE INCLUSION

	PIN POINT		CRYSTAL			
<b>N</b> None or No White Inclusion						
	<b>PP1</b> Pin Point Minor Inclusion	<b>PP2</b> Pin Point Medium Inclusion	<b>CRL1</b> Crystal Minor Inclusion	<b>CRL2</b> Crystal Medium Inclusion	<b>CRL3</b> Crystal Heavy Inclusion	
	SPREADED		FEATHER			
						
	<b>SPR1</b> Spreaded Minor Inclusion	<b>SPR2</b> Spreaded Medium Inclusion	<b>SPR3</b> Spreaded Heavy Inclusion	<b>FR1</b> Feather Minor Inclusion	<b>FR2</b> Feather Medium Inclusion	<b>FR3</b> Feather Heavy Inclusion





## CLOUD

Table | Side





SGS specifies White Inclusion for 2 sections:

# BLACK INCLUSION

<b>N</b> None or No Black Inclusion				
	<b>BPP</b> Pin Point Black Inclusion	<b>B1</b> Minor Black Inclusion	<b>B2</b> Medium Black Inclusion	<b>B3</b> Heavy Black Inclusion





SGS specifies Black Inclusion for 2 sections: **Table | Side**

# SPOT INCLUSION

<b>N</b> None or No Spot Inclusion					
	<b>PP</b> Pin Point	<b>R1</b> Red Minor	<b>R2</b> Red Medium	<b>G1</b> Green Minor	<b>G2</b> Green Medium

SGS specifies Spot Inclusion for 2 sections: **Table | Side**

# OPEN INCLUSION

<b>N</b> None or No Open Inclusion				
	<b>HL</b> Hair Line Open Inclusion	<b>SM</b> Small Open Inclusion	<b>MD</b> Medium Open Inclusion	<b>HV</b> Heavy Open Inclusion

SGS specifies Open Inclusion for 4 sections: **Table | Crown | Pavilion | Girdle**

# LUSTER LEVEL OF BRILLIANCE

## BRILLIANCE

**EX**  
Excellent Luster

**VG**  
Very Good Luster

**G**  
Good Luster

## MILKY GRADES

**ML1**  
Slight Milky

**ML2**  
Medium Milky

**ML3**  
Heavy Milky

# SHADES

**N**  
None or  
No Shade

**BT**  
Brown Tinge

**LB**  
Brown Shade

**MT1**  
Light Mixed Tinge

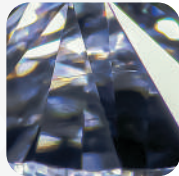
**MT2**  
Deep Mixed Tinge

**GT**  
Green Tinge

**PT**  
Pink Tinge

# GRAINING

**N**  
None or  
No Graining



**IG**  
Internal Graining



**SG**  
Surface Graining

**IG & SG**  
Internal &  
Surface Graining

# NATURAL

## NATURAL

**N**  
None or  
No Natural



**NT – SM**  
Natural Small

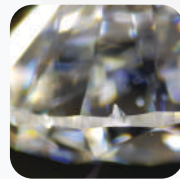


**NT – MD**  
Natural Medium



**NT – HV**  
Natural Heavy

## INDENTED NATURAL



**INT – SM**  
Indented Small



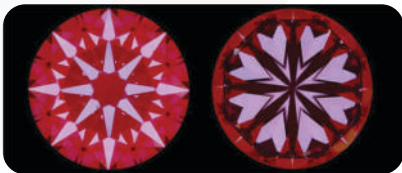
**INT – MD**  
Indented Medium



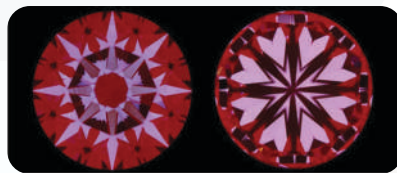
**INT – HV**  
Indented Heavy

**NTINT**  
Natural and  
Indented Natural

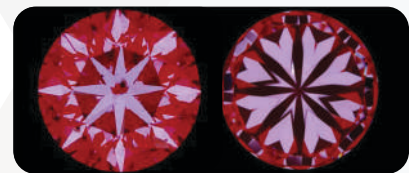
# HEART & ARROW



**EX**  
Excellent Heart & Arrow



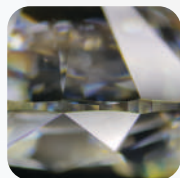
**VG**  
Very Good Heart & Arrow



**G**  
Good Heart & Arrow

# EXTRA FACET

**N**  
None or  
No Extra  
Facet



**SM**  
Small Extra Facet



**MD**  
Medium Extra Facet



**HV**  
Heavy Extra Facet

SGS specifies Extra Facet for 3 sections: Table | Crown | Pavilion

# ELIGIBLE GOODS



**FP**  
Footprints Eligible Goods



**FME**  
Forevermark Eligible Goods



**CME**  
Canadamark Eligible Goods



**COO**  
Code of Origin Eligible Goods

# SGS COMMENTS

## EXCLUSIVE COLOR

If SGS Graded Color is "G" and Laboratory certifies it as "H", then SGS specifies "EXCLUSIVE COLOR" in the comment column.

## EXCLUSIVE CLARITY

If SGS Graded Clarity is "VS2" and Laboratory certifies it as "SI1", then SGS specifies "EXCLUSIVE CLARITY" in the comment column.

## EXCLUSIVE FLUORO

If SGS Graded Fluorescence is "FAINT" and Laboratory certifies it as "MEDIUM", then SGS specifies "EXCLUSIVE FLUORESCENCE" in the comment column.

## BROWN TINGE

SGS specifies "BROWN TINGE" in the comment, when it has comparatively Light Brown Shade of color. Normally with D, E & F Color. G color may or may not have Brown Tinge.

## MIX TINGE 1

SGS specifies "Mix Tinge 1" in the comment, when it has comparatively Light Mixed Tinge of Yellow and Brown / Other colors.

## (- -) INSPECTION ADVISABLE

According to SGS, diamond has LC shade, but it might be considered as Very Very Slight Brown Shade. SGS advises you to get it inspected personally or by your KAM (our Business Multiplier) at SRK before buying.  
-- For Brown Shade

## EYE CLEAN

No Inclusions visible to the "Naked Eye" when viewed from the "Face Up" position in Daylight or Equivalent Spot Lighting from a relatively short distance of 6 - 10 Inches approximately. Normally with SI1 and lower clarity grade.

## UPGRADED COLOR

If SGS Graded Color is "H" and Laboratory certifies it as "G", then SGS specifies "UPGRADED COLOR" in the comment column.

## UPGRADED CLARITY

If SGS Graded Clarity is "SI1" and Laboratory certifies it as "VS2", then SGS specifies "UPGRADED CLARITY" in the comment column.

## UPGRADED FLUORO

If SGS Graded Fluorescence is "MEDIUM" and Laboratory certifies it as "FAINT", then SGS specifies "UPGRADED FLUORESCENCE" in the comment column.

## BROWN

SGS specifies "BROWN" in the comment, when it has comparatively Deep Brown Shade of color.

## MIX TINGE 2

SGS specifies "Mix Tinge 2" in the comment, when it has comparatively Deep Mixed Shade of Yellow and Brown / Other colors.

## (#) INSPECTION ADVISABLE

According to SGS, it has LC shade, but it might be considered as Very Very Slight Mixed Shade of Yellow and Brown / Other colors. SGS advises you to get it inspected personally or by your KAM (our Business Multiplier) at SRK before buying.  
# For Mixed Shade

# Shree Ramkrishna Exports Pvt. Ltd. (SRK)

Shree Ramkrishna Exports Pvt. Ltd. (SRK), founded over six decades ago is one of the world's leading natural diamond crafting and exports companies, built on the principles of Sophisticated Simplicity, Transparency, and Ethics; headquartered in Mumbai with state-of-the-art net-zero facilities, SRK Empire and SRK House, in Surat, Gujarat, the group is a strong family of 7,000+ members with an annual revenue of nearly USD 1 Billion and direct rough sourcing contracts with global mining leaders such as De Beers, Burgundy Diamonds, and Rio Tinto.

SRK is a certified member of the Responsible Jewellery Council and the first diamond crafting company to join the Science Based Targets initiative (SBTi), with LEED Platinum-certified green buildings and a strong commitment to responsible sourcing, traceability, and sustainability, while through SRK Knowledge Foundation, the group till date has contributed millions of dollars towards various initiatives in education, healthcare, skill development, and community welfare, aligned with the United Nations Sustainable Development Goals, continuing to set global benchmarks in natural diamond craftsmanship while creating meaningful societal impact.



SRK EMPIRE



SRK HOUSE

srk.one

ISO 9001 | ISO 14001 | ISO 45001 | ISO 22000 | ISO 50001 | PAS 7000 | ISO 24016

## PURERELATIONSHIPS



SIGHTHOLDER is a trade used under licence from The De Beers Group of Companies | Forevermark is a part of The De Beers Group of Companies

PURE LIGHT